



SERVICES INDIA LIMITED

# ONE ACCOUNTABLE PARTNER FOR INDUSTRIAL SITE OPERATIONS

*CHP, AHP, railway, HEMM, material handling, manpower, fabrication, and site-support services across India.*

**HEMS Corporation Services  
India Limited  
Korba, Chhattisgarh, India**

ISO 9001:2015  
ISO 14001:2015  
ISO 45001:2018

[www.hemscrpn.co.in](http://www.hemscrpn.co.in)  
[headoffice@hemscrpn.com](mailto:headoffice@hemscrpn.com)



# HEMS at a Glance

Built for continuous industrial operations across India.

HEMS Corporation Services India Limited is a **Korba-headquartered** integrated site-operations partner serving power plants, steel works, mining operations, and heavy industrial facilities. With 25+ years of operating roots, 6,200+ personnel deployed across 8+ states, and three ISO management system certifications, HEMS delivers manpower, maintenance, material handling, and site-support services under single-point accountability.

25+

Years  
Operating Legacy

6,200+

Personnel  
Deployed

8+

States  
Footprint

3

ISO Standards  
Certified



## Legacy Timeline

1999

Operating roots

2003

HEMS Corporation  
established

2024

Incorporated as HEMS  
Corporation Services  
India Limited

Operating across Chhattisgarh, Madhya Pradesh, Maharashtra, Odisha, Jharkhand, Uttar Pradesh, Telangana, and other Indian states.

# What HEMS Delivers

An embedded execution partner for operating sites.

HEMS supports operating sites where reliability, safety, manpower discipline, and equipment availability matter every day. The company combines trained site teams, machinery support, and certified management systems with practical field execution across maintenance coordination, fabrication, field modification, spares follow-up, and shift reporting.

## Embedded site knowledge



Deep operating experience across coal-belt plants, client teams, and multi-scope site environments in India.

## Rapid mobilization



Large manpower base with teams, supervisors, tools, and equipment mobilized to site within agreed timelines.

## Full-scope execution



End-to-end scope under one accountable partner — one contract, one supervision chain, one point of responsibility.



Manpower | Maintenance | Material Handling | Site Support | Fabrication | Railway Operations

Trusted by power plants, steel works, and mining operations since 1999.

# Industries Served

Operating support across power, metals, mining, cement, railway-linked, and heavy industrial environments.

## Power



CHP, AHP, boiler/turbine auxiliaries, housekeeping, material movement, plant site services

## Steel & Metals



Material handling, crane support, fabrication, HEMM maintenance, operating-site manpower

## Mining & Coal-linked



HEMM support, coal loading/unloading, rake handling, field manpower

## Cement & Process



Raw material handling, conveyor support, site services

## Railway-linked



MGR, yard, track, rake, locomotive O&M, weighbridge support

## Heavy Industrial



Multi-scope O&M, manpower, housekeeping, fabrication, firefighting support



Serving India's core industrial sectors with embedded site-operations expertise since 1999.

# Service Families

Six service families at a glance, detailed on the pages that follow.

## CHP, AHP & Bulk Handling



Coal handling plant O&M, ash handling, conveyor systems, stacker-reclaimers, wagon tippers, coal yard management

## Manpower & Facility Support



Skilled & semi-skilled deployment, housekeeping, firefighting, and facility-support services.

## HEMM Operations



Heavy earth-moving machinery — dozers, excavators, pay-loaders, tippers for coal/overburden movement and site grading

## Railway Operations



MGR track maintenance, loco/rake operations, wagon loading/unloading, weighbridge, signal coordination

## Fabrication & Supplies



Structural fabrication, pipe/duct work, chute lining, equipment erection, AMC-based maintenance, material supply

## Plant O&M Support



Boiler/turbine auxiliaries, ESP, cooling towers, DM plant, WTP, compressors, pumps, valves, and rotating equipment



Each service family runs under one contract and one supervision chain.

**6 Service Families | 25+ Years | 6,200+ Personnel | 8+ States**

# CHP, AHP & Bulk Handling

Execution support for coal, ash, and bulk-material systems.

HEMS supports coal handling plant O&M across wagon tippers, track hoppers, paddle feeders, crushers, conveyors, transfer points, stacker-reclaimers, and coal-yard areas, and ash handling plant O&M across fly ash, bottom ash, slurry systems, pumps, pipelines, silos, valves, and mill reject handling.



## Coal Yard Management

Coal yard management and CHP housekeeping. Conveyor, crusher, chute, transfer point, and stacker-reclaimer support. Pay-loader and tipper deployment for yard movement and spillage control, with shift-level operating records and client coordination.



## Rake and Ash Operations

Rake loading and unloading, wagon loading, rake clearing, and weighbridge coordination. Dry ash, slurry, mill reject, and pond-ash transportation, with bulk coal and iron-ore logistics, operating records, and shift-level reporting to client teams.



### Key Equipment Categories

Wagon Tippers | Stacker-Reclaimers | Conveyors | Crushers | Ash Slurry Pumps | Pay-loaders

Complete CHP and AHP O&M under one contract, one supervision chain.

# Railway and HEMM Support

Site logistics and equipment uptime support.

## Railway and HEMM Operations

HEMS supports railway-linked industrial operations including MGR systems, yard management, track and interlocking support, rake movement, locomotive operation and maintenance, and weighbridge operations.



## Maintenance & Readiness Framework

Preventive and breakdown support across locomotives, dozers, cranes, and heavy equipment.

### Preventive Maintenance

- Scheduled checks
- Routine servicing
- Performance tracking

### Breakdown Response

- Rapid site response
- Diagnosis and repair at site
- Downtime tracking and reporting

### Safety Discipline

- PPE compliance
- Safe operations
- Route discipline

### Operational Readiness

- Inspection protocols
- Lubrication routines
- Movement management

### Key Equipment Categories

Locomotives | Dozers | Loaders | Excavators | Cranes | Dumpers | Compressors | Pumps

Complete railway and HEMM uptime support under one contract.

# Manpower and Facility Support

Support for manpower-heavy operating environments.

HEMS provides skilled, supervised manpower and integrated facility management services for industrial sites — from operations crews and maintenance teams to housekeeping, horticulture, and civil upkeep.

## Skilled Manpower

- Operations crews (plant, CHP, HEMM)
- Maintenance fitters and electricians
- Supervisors and shift in-charges
- Helpers and semi-skilled support
- Statutory and safety-trained teams
- Mobilization as per approved scope

## Facility Management

- Housekeeping and sanitation
- Facility upkeep as per approved scope
- Firefighting support manpower
- Roster and attendance coordination
- Facility-level reporting



### Deployment Model

Skilled Crews | Supervisors | Shift Teams | Facility Staff | Safety Officers

6,200+

Personnel Deployed

6

Service Families

8+

States Covered

Single-point accountability for approved manpower and facility scopes.

# How HEMS Works

## Continuous Cycle



### 01 Mobilize



Site assessment, team deployment, equipment positioning, and safety induction per approved scope and site readiness.

### 02 Operate



Daily shift execution across CHP, HEMM, railway, and manpower scopes under client SOPs.

### 03 Maintain



Preventive and breakdown maintenance with spares management and downtime tracking.

### 04 Report



Shift-level MIS, daily logs, monthly dashboards, and compliance documentation.

### 05 Safety



PPE enforcement, toolbox talks, incident reporting, and ISO 45001 protocols.

### 06 Improve



Root cause analysis, process optimization, and continuous performance upgrades.

## Continuous Improvement Cycle

Mobilize > Operate > Maintain > Report > Safety > Improve > Repeat

Step 06 feeds back into 01. Every cycle raises the operating baseline.

# Operating Proofs

CHP / Bulk Material Handling

## 1,740 MW - CHP overhaul credential



Coal handling plant overhaul executed at a captive power complex. Detailed records available through approved review channels.

## 7,288 Components - Replaced and restored

Documented within the overhaul scope across both plant streams.

50 Tonnes



**Structural fabrication** across overhaul and shutdown scopes.

12 Modifications



**Engineering upgrades** including chute redesign, belt alignment, and dust suppression.

AHP O&M Capability



Ash handling plant O&M with pneumatic and hydraulic slurry systems.



## Client Recognition

Client recognition from Adani Power, JSW BPSL, Vedanta and CSPGCL for safety, service, and execution performance across operating sites.

## Key Systems Managed

Belt Conveyors | Crushers | Stacker-Reclaimers | Wagon Tippers | Ash Slurry Pumps  
Track Hoppers

# Selected Client References

Public-sector and private-sector references across power, mining, steel, metals, railway-linked operations, and heavy industry.

## Power, Mining and Coal



**Power and captive power:** NTPC, Adani Power, Sasan Power, CSPGCL, NSPCL, DVC, GMR, Reliance Power, Lanco.

**Mining and coal-linked operations:** SECL, MCL, NCL, WCL, CCL, NMDC, and Coal India-linked service references.



## Steel, Metals, Railway and Heavy Industry



**Steel, aluminium and metals:** SAIL, JSW / BPSL, BALCO, Vedanta, Jindal Steel & Power, NALCO, Tata Steel.

**Railway-linked and heavy industrial:** Indian Railways, Adani Enterprises, Adani Electricity, DB Power, TKIL (thyssenkrupp), UPL, STEAG.

Detailed site-wise references are available during approved RFQ and vendor-onboarding discussions.

# Vendor Readiness and Compliance

Certifications, registrations, and procurement readiness.

## ISO Standards



HEMS holds ISO 9001:2015, ISO 14001:2015, and ISO 45001:2018 certifications, maintained through certified management systems and regular external audits.



## Vendor Readiness



Certifications at a Glance

ISO 9001:2015  
Quality Management

ISO 14001:2015  
Environmental

ISO 45001:2018  
Health & Safety

Registrations

NSIC

Class A Electrical

MSME / Udyam Micro

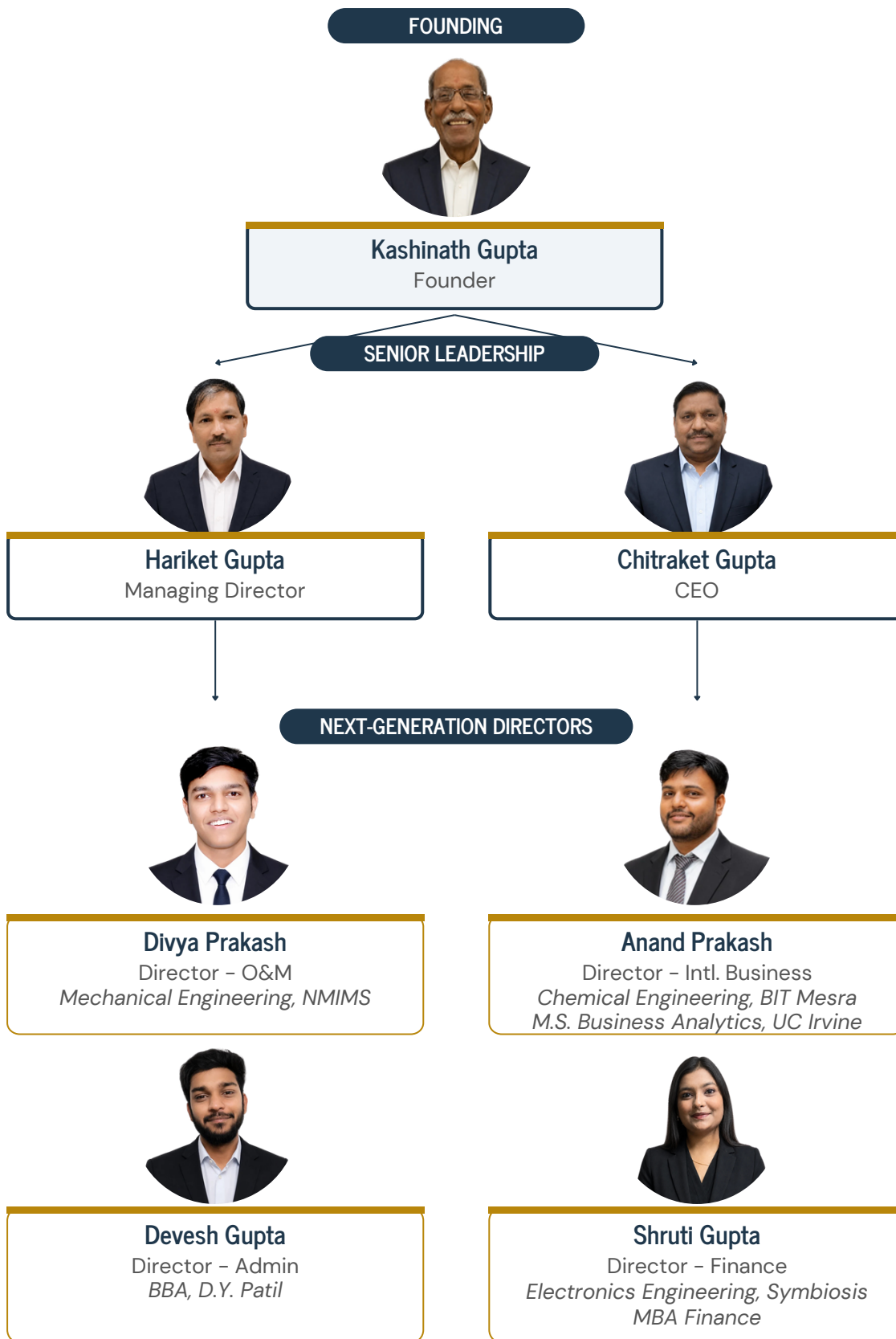
GeM

Railway / Private Siding Works Consultant

Procurement teams can request ISO certificates, vendor registration material, statutory records, client/service references, safety credentials, and qualification material through approved channels.

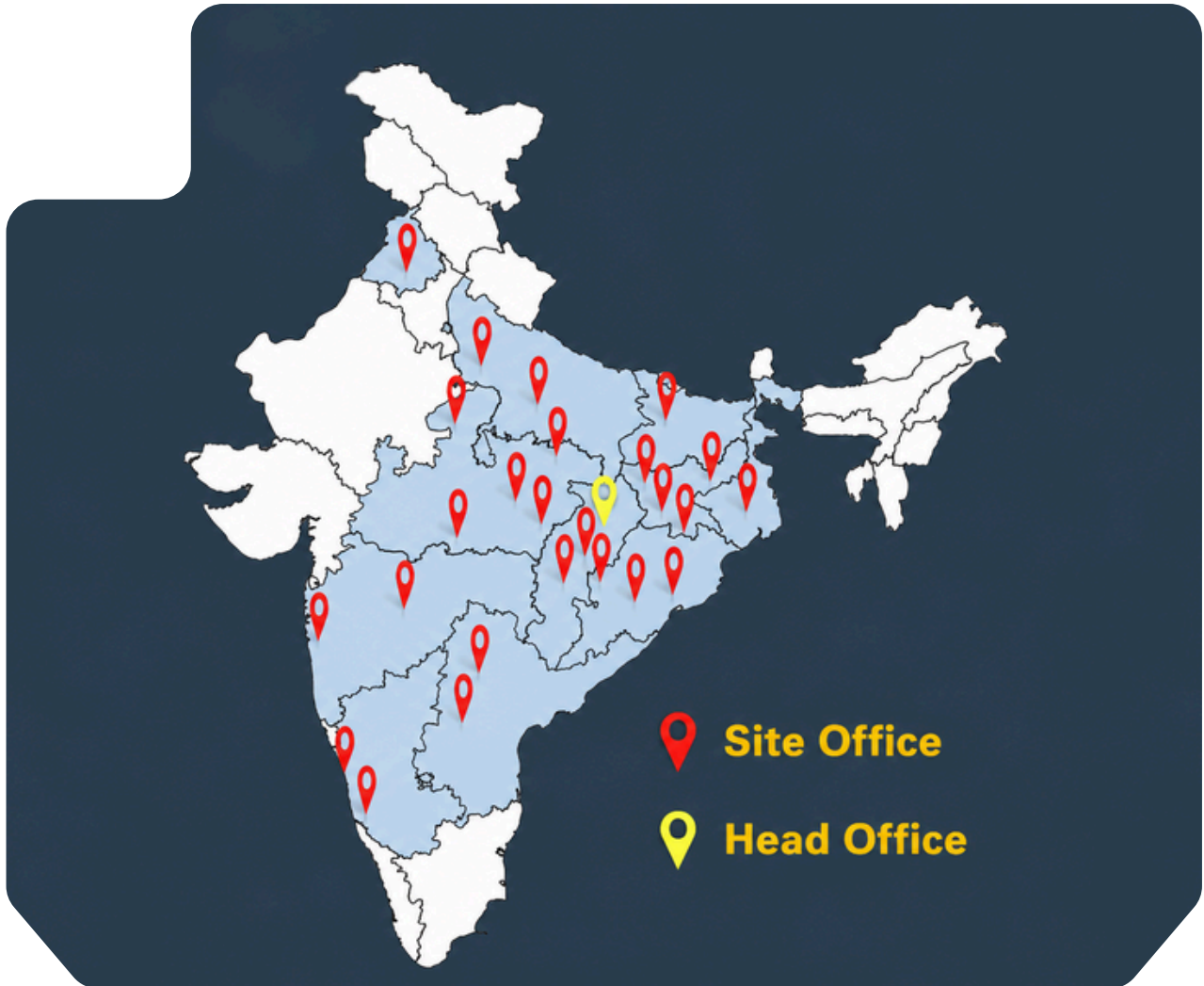
# Leadership

Built on operating experience, strengthened by next-generation management.



# Our Presence

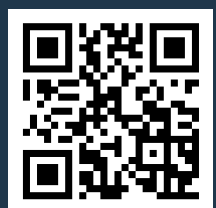
Operating across India with site teams supporting major thermal, mining, steel, and industrial operations.



## Contact HEMS

*For RFQs, vendor onboarding, credentials, and scope discussions, contact HEMS Head Office.*

110 Sharda Vihar, Korba, Chhattisgarh 495677  
headoffice@hemscrpn.com | www.hemscrpn.co.in  
+91 98931 90016 | +91 98935 41415 | +91 79874 15704



Scan to visit our website

